

# SPECIAL WATER FILTER



## INSTALLATION GUIDE

*SERIES: 510, 520, 520UF*

# Installation & **ASSEMBLY**

*Simply Mount  
between the cold water pipe.*



**FILTER CHANGE:** Every 6 months or Max 12 months

## **WARRANTY / SAFETY INSTRUCTIONS:**

Before using the filter, it must be checked for any damage. The warranty covers defects in materials and workmanship for a period of 12 months from the date of purchase. Our general terms and conditions apply.

- Comply with state and local plumbing codes during installation and use.
- Do not connect to hot water supply lines; use cold water only. Maximum operating temperature: 100°F (37.8°C).
- Use only with microbiologically safe water or water of known quality. Ensure adequate disinfection before or after system use for water of uncertain quality.
- Product performance may differ based on flow rate, line pressure, and local water conditions.



## SCOPE OF DELIVERY

- A 1 x Special Filter Complete**  
[510, 520, 520UF]

### Optional – Installation Kit

- B 1 x Flex hose 1**  
Union nut on both sides 3/8"
- C 1 x Flex hose 2**  
3/8" external thread and  
3/8" union nut
- D 2 x transition piece 3/8"**
- E 2 x Security Clip**



## 01 TURN OFF WATER

Turn the cold water connection under your Sink (usually marked with a blue dot) so that there is no more water flow can arise. Open the tap emptying. Place a bucket under the Hoses around any remaining water that might escape to catch and avoid puddles.



## 02 PREPARATION

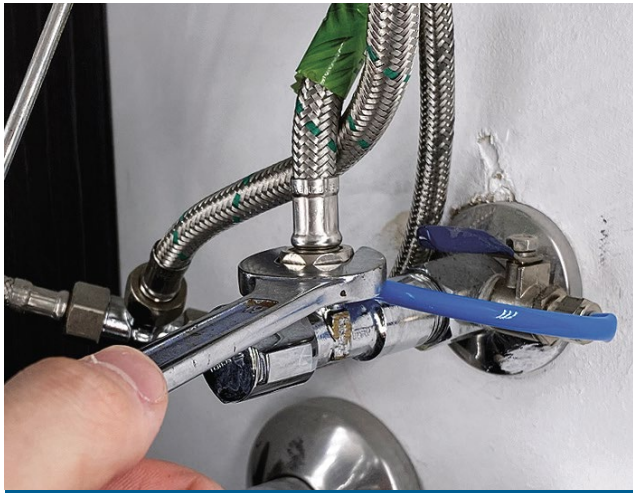
Take your new Special Filter and look for a suitable place for this under the sink. Make sure that this is in reach to the cold-water connection. Unscrew the union nut on the cold water connection to attach the Flex hose. (Tool required: 19 mm open-end wrench)



## 03 ASSEMBLY / INSTALLATION

You can optionally mount the filter on the wall attach or place on the floor. Provided If you want to attach the filter to the wall, screw the filter head of your filter away. Fix this with the help of a drill a suitable location. Use for alignment if necessary, a spirit level. Turn the cartridge back into the filter head.





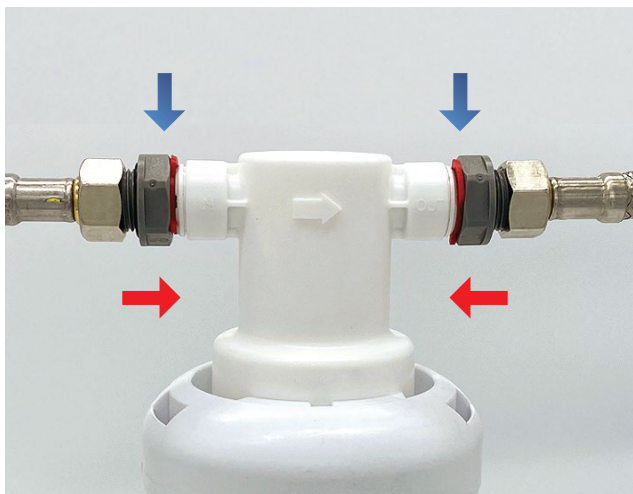
#### 04 FLEX HOSE CONNECTION 1

Attach the flexible hose 1 (with union nut on both sides), on which Cold water connection. Turn the hose with the 19 mm open-end wrench sufficiently firm.



#### 05 FLEX HOSE CONNECTION 2

Now connect the flexible hose that was disconnected from the cold water connection in step 2 with the supplied flexible hose 2. Use the end of the hose with the external thread.



#### 06 CONNECT FILTER

Insert the two transition pieces into the hole connections of the filter head (red arrows). Set the safety clips (Blue Arrows). Connect that coming from the cold water connection Flex hose 1 with the threaded connection at the input of the filter (marked "IN"). Shut off the one coming from the faucet end of the flexible hose 2 to the second, threaded connection located on the filter (marked "OUT").



#### 07 FINAL

Tighten the connections tightly! Turn that Cold water connection on so that the water can flow again. Carry out a leak test all connecting parts.

Rinse the filter for 2-3 minutes until water runs clean and your filter is ready for use.



# Simply *Comfortable*

Do you want fresh, clear and tasty water?  
Special Filters Offers - Precision Redefined: Experience  
the Power of German Scale Prevention

---

With the SPECIAL FILTER you will have more time for the beautiful things in life in the future. You benefit from tasty, perfectly treated drinking water from your tap. Your Water is optimized within your own four walls, the smell and taste improve, and a wide variety of dirt particles and other contaminants are reliably removed – 24 hours a day, 7 days a week.

## YOUR ADVANTAGES

Our Special Filters

- Generate tasty drinking water
- Eliminate & reduce targeted pollutants
- Effectively improve the taste & odor of water
- Reduce Scale Build Up
- pH balance water
- Are quick and easy to install
- Are easy to change



SP-510



SP-520



SP-520UF



**WATCHER**<sup>®</sup>  
WATCH WATER

*a Water Company*

**Watch-Water<sup>®</sup> GmbH**

Fahrlachstraße 14

68165 Mannheim, Germany

☎ Tel. +49 621 87951-0

☎ Fax +49 621 87951-99

✉ [info@watchwater.de](mailto:info@watchwater.de)

**[www.watchwater.de](http://www.watchwater.de)**

Scan me

