



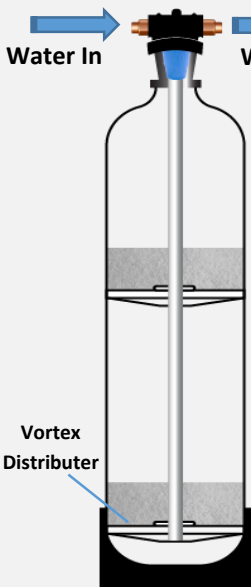
# FILTERSORB<sup>®</sup> 100

SCALE PREVENTION MEDIA BASED ON NAC TECHNOLOGY

## FILTERSORB<sup>®</sup> 100 Process Description

### Nucleation Assisted Crystallization

Water In → Water Out



#### Simple Calculation

##### Chamber1.

2. Liters of **Filtersorb SPA** + **CarbonTrapp** to Remove Anions From **Hardwater** up-to 50 grains.

#### Simple Calculation

##### Chamber2.

2. Liters of **Filtersorb SP3** needed to treat 1000 liters of Hardwater up-to 50 grains Life of Media 7-10 years

- A. Up Flow Tank Adapter R 1" 1½" 2"  
Flow Rates 0.5m<sup>3</sup> to 20m<sup>3</sup>
- B. Vortex tanks 40% **Chamber 1**  
60% **Chamber 2**  
For Sizes please ask [Watch Water<sup>®</sup>](http://www.watchwater.de)
- C. Tools to Fill Chambers 1 and 2.



High Efficacy



100 % Efficiency



No Maintenance



Scale Prevention

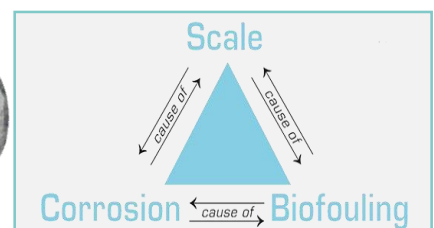
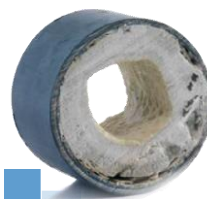
100% Scale Prevention

## Watch Water<sup>®</sup> Challenge

All over the world, the ground water contains geologically – caused **Calcium, Magnesium, Silicate** and **Sulphate** in high concentration. The overall water hardness can reach values of more than 20 to 80 grains. (1) Grain is equal to 17.1mg of **CaCO<sub>3</sub>**. Hardwater causes many problems in both private households and Industry. Therefore everybody has to install a water softener system to remove this significantly increased content of Calcium and Magnesium but they also have to remove silicates and sulphates which cannot be removed through a water softener. To remove this they have to install partial desalination and this is very expensive.

With **FILTERSORB<sup>®</sup> SP3** and **FILTERSORB<sup>®</sup> SPA** each household can **save 2 Euro** per cubic meter compared with the use of household water softener.

At the same time, the **FILTERSORB<sup>®</sup> 100%** process provides 100% corrosion protection that means better water quality than traditional softening systems. The toxic metals such as Lead and Copper are reduced 100%. This is the reason to give it the name "**FILTERSORB<sup>®</sup> 100**".

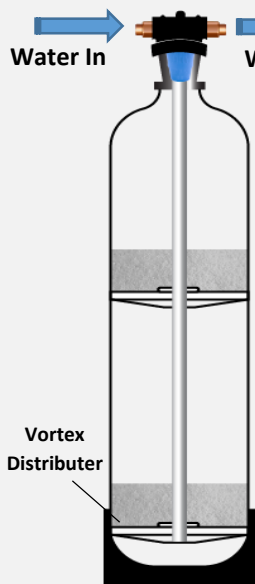


# PROCESS DESCRIPTION

## Filtersorb 100 Process Description

### Nucleation Assisted Crystallization

Water In → Water Out



#### Simple Calculation

**Chamber1.**  
2. Liters of **Filtersorb SPA**  
+ **CarbonTrapp** to Remove  
Anions From **Hardwater** up-  
to 50 grains.

#### Simple Calculation

**Chamber2.**  
2. Liters of **Filtersorb SP3**  
needed to treat 1000 liters  
of **Hardwater** up-to 50  
grains Life of Media 7-10  
years

- Up Flow Tank Adapter R 1" 1½" 2"  
Flow Rates 0.5m<sup>3</sup> to 20m<sup>3</sup>
- Vortex tanks 40% **Chamber 1**  
60% **Chamber 2**  
For Sizes please ask **Watch Water®**
- Tools to Fill **Chambers 1 and 2.**

## Products to Order

- **Magic Filter**
- **My Filtersorb-SP 100**
- **My Titan Filter**
- **My Katalox-Light Filter**
- **My Catalytic Carbon Filter**
- **My Trappsorb Filter**
- **My Nitrotrapp Filter**



## HOW FILTERSORB® 100 WORKS

The **Iron** and **Manganese** free **Hardwater** flows through the **FILTERSORB® SP3** chamber 2 here the **Partial Softening** takes place **Temporary Hardness, Calcium, Magnesium** and **Carbonate hardness** are separated into **CaCO<sub>3(S)</sub>** crystals and **CO<sub>2(g)</sub>**. Water flows with **CaCO<sub>3</sub>** crystals and Anions such as Sulphates and silicates including carbon dioxide. The produced carbon dioxide, sulphates and silicates are removed in upstream **Chamber No. 1** via **FILTERSORB® SPA**. From the **Chamber No.1** the treated water moves the following application.

The first Scale  
Prevention Media with  
100% top Quality  
Drinking Water

## Benefits

- **Effective removal of hardness**, Lead, Copper, Sulphates, Silicates and CO<sub>2</sub> from water.
- Simultaneous removal of Cations and Anions without corrosion effects of CO<sub>2</sub> in water.
- **Zero Operating Costs** without any Electric and Regeneration Costs.
- **Problem free operation** with absolute no automation.
- Fast capacity increases by **FILTERSORB® SP3** and **SPA** addition.
- Especially Environmentally friendly process
- **Reduce 100% CO<sub>2</sub>** the greenhouse gas (Carbon Dioxide) during the operation
- Can be installed **Worldwide** to produce **Scale Free Operation.**

⚠ Beware of fake products